



Solar Technologies

Solar L Bus & I Bus

Data Sheet

Ulbrich Solar Technologies, Inc.

692 Plant Road

Westminster, SC 29693

solar@ulbrich.com

www.pvribbon.com

1. Size:

Copper core dimension

Width: 4.0 - 6.5mm +/- 0.08

Thickness: 0.20 - 0.5 mm +/- 0.008

2. Chemical Composition Base Material:

Material CDA 102 - ASTM B170
CDA 110 - ASTM B5
ETP1 - DIN EN 13602

3. Mechanical Properties:

Measurement method: The pull force is measured on the finished copper wire after annealing.

The pull force is then divided by the total nominal cross section of the copper core only.

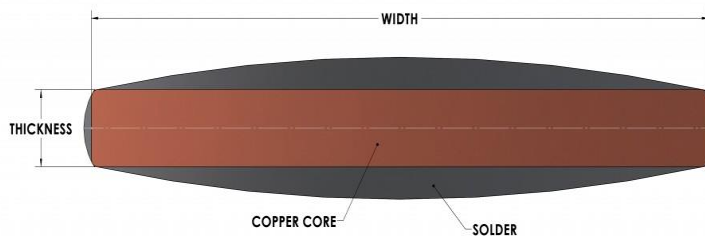
Testing is done in accordance with SEMI PV RIBBON STANDARDS PV018-0811 and PV019-0811

Tensile Strength: max 280 N/mm²

Yield Strength: max 150 N/mm²

Elongation: min 15%

*According to Customer Specifications



4. Coating:

Solder Coated Copper Wire - All sides coated

Leaded Solder Alloys

Sn62Pb36Ag2

Sn60Pb40

Lead Free Solder Alloys

Sn100

Sn96.5Ag3.5

*Other solder alloys are available on request

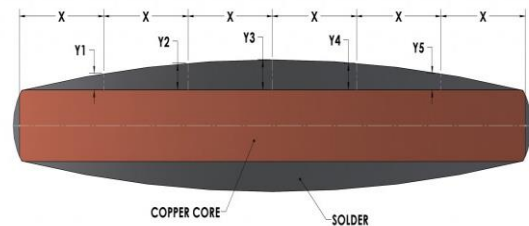
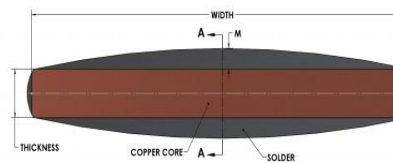
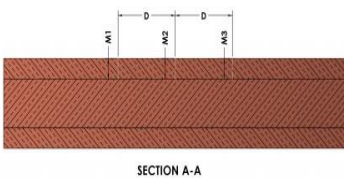
Solder Coating Thickness

16-24 μm PEAK

*According to Customer Specifications

Peak

Average



5. Formed and Cut Bus Ribbon

L Shaped Bus



All information provided above is based on our current standard knowledge and does not claim to be exhaustive. This information may not be passed on to third parties without approval by Ulbrich Solar Technologies, Inc.



I Shaped Bus



*Other shapes are available on request

6. Deminsions of Shape Type

L-Shape

Side Length (Short)

Side Length (Long)

50 - 150 mm

150 - 500 mm

I-Shape

Max 500mm

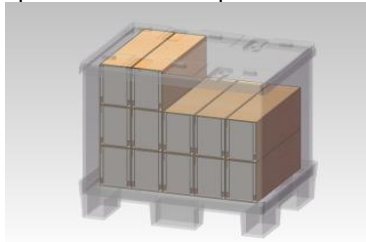
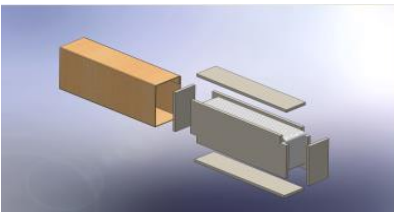
*Other lengths are available on request

Bending Radius

6-9 mm

7. Packaging

Customized packaging design based on the type of form/shape and number of pieces



Please contact Solar@Ulbrich.com for further details and questions.